

Preheating unit | APU

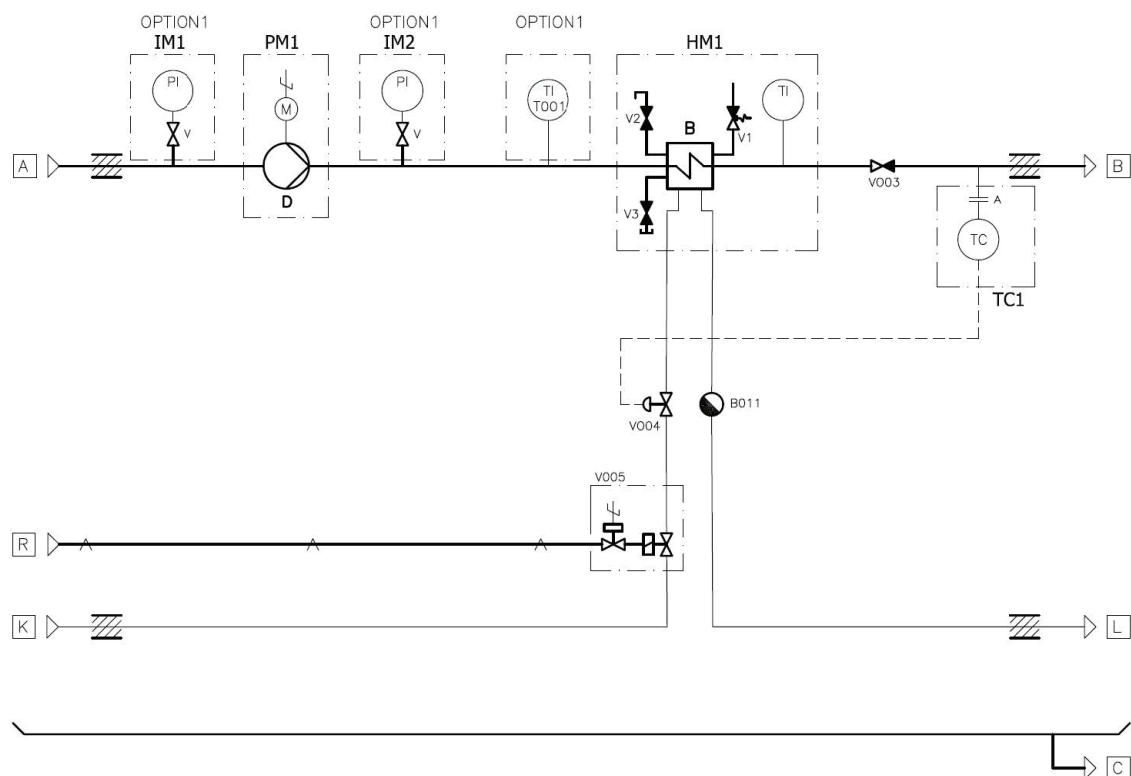


APU operating principle

The APU unit is designed to heat engine HT-water. The heating media of the heater (HM1B) can be steam or thermal oil. The APU unit is equipped with built on HT-water circulation pump (PM1), which provides flow of continuously heated water. The water temperature is kept constant by built-in self-actuating thermostatic controller (V004) located in the unit.

The APU unit can be controlled from a control cabinet mounted on the unit locally or remotely from another location. Additional pressure gauges and thermometer available as an option (Option 1).

P&I diagram of the Auramarine Preheating Unit (Steam version)



APU Product range - standard units

Order code	Type	Pump capacity (m ³ /h, @1 bar 400V 50Hz/440V 60Hz)	Heating power max (kW)	Max. steam consumption / Thermal oil flow	Heating media (S=Steam, T=Thermal oil)
CG200030	APU-M-12-54-S	12	54	91 kg/h	S
CG200031	APU-M-29-144-S	29	114	254 kg/h	S
CG200032	APU-M-42-252-S	42	252	443 kg/h*	S
CG200033	APU-M-12-54-T	12	54	5.5 m ³ /h	T
CG200034	APU-M-29-144-T	29	144	15.1 m ³ /h	T
CG200035	APU-M-42-252-T	42	252	23.8 m ³ /h	T

Technical data

Water outlet temperature	80°C (operating temperature set point)
Heating media	Steam (S) / Thermal oil (T)
Input voltage and frequency	400 V 50 Hz , 440 V 60 Hz , 690 V 50/60 Hz
Control voltage	230 VAC, internally transformed
Design pressure max	10 bar (water, steam and thermal oil side)
Design temperature max.	105°C (water), 180°C (steam) and 200°C (thermal oil)
Pressure head	0.8-1.0 bar
Required compressed air pressure	4-8 bar
Heat transfer capacity max.	54 / 144 / 252 kW
Pump capacity (1 bar, 400V 50 Hz, max)	12 / 29 / 42 m ³ /h

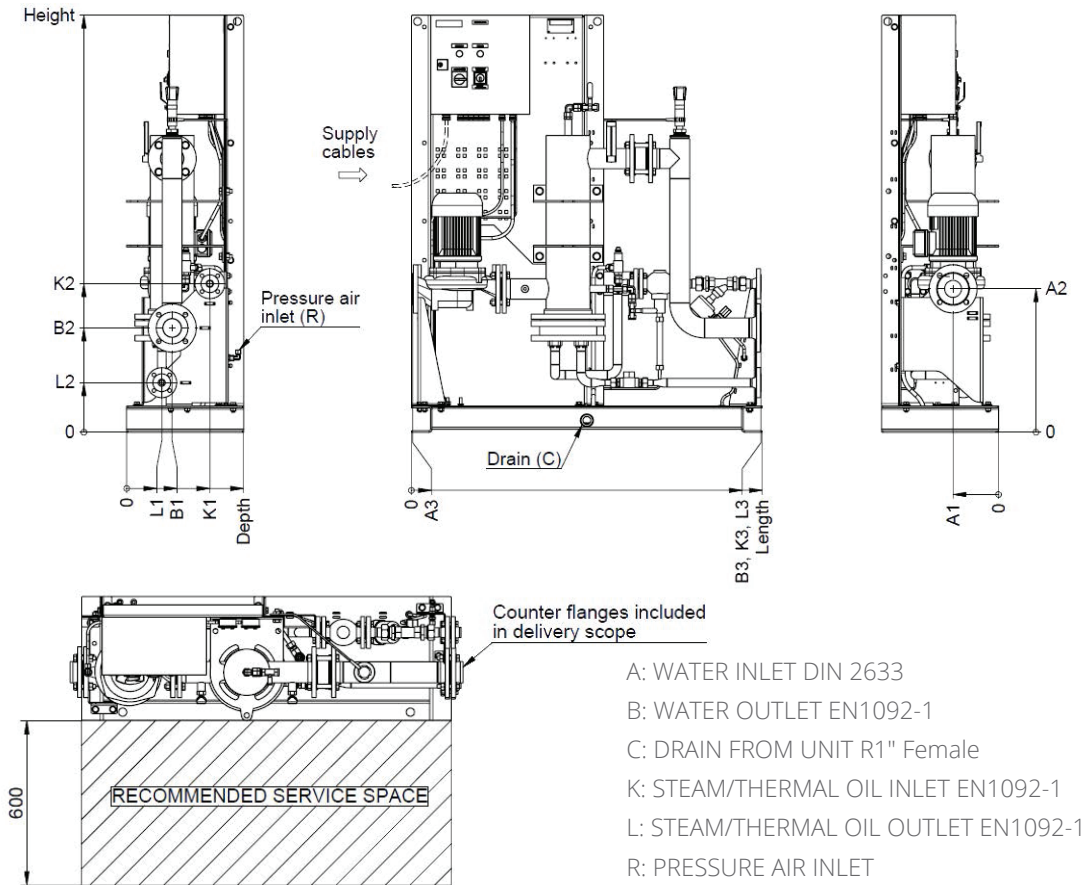
Main components

Position	Denomination
PM1	HT-Water preheating pump , for circulating HT-water via preheater at a lower engine load or when the engine is in stand-by mode.
HM1B	HT-water heater , heating media is steam / thermal oil
HM1V1	Safety valve , for heater protection
HM1V2	Vent valve , ball valve
HM1V3	Drain valve , ball valve
HM1TI	Thermometer , liquid pillar type, scale in °C
B011	Steam trap (only for steam versions)
V003	Non-return valve
V004	Temperature control valve : Self actuating thermostatic control valve, setting range :+40-105°C, set point +80°C
V005	Steam/Thermal oil shut off valve : Valve with electro pneumatic actuator. For closing the steam/thermal oil inlet when pump is stopped.
Option 1	
IM1PI, IM2PI	Pressure gauge- Ø 63 mm, glycerine filled, scale MPa+kPa/bar/psi
IM1V, IM2V	Hand valve
T001	Thermometer, liquid pillar type, scale in °C

Control panel materials, miscellaneous

Control panel	<ul style="list-style-type: none"> • Main switch for supply voltage • HT-Water pump starter • On/Off/Remote switch for the pump • Control of steam/thermal oil shut off valve; valve closes when pump is stopped meanwhile the pump stops with short (adjustable) delay • Remote control possibility of the pump and shut off valve • Cable glands for in/out cabling are included
Frame	<ul style="list-style-type: none"> • Bolted sheet metal construction • 1" threaded female connection at frame for draining of leakages
Painting system	<ul style="list-style-type: none"> • ISO 12944-5; 2007 A2.06 EP120/2-FeSa2½ (frame and pipes)
Pipes	<ul style="list-style-type: none"> • Seamless carbon steel P235GH, EN10217 or equal • Welding according to ISO 5817 C • Thermal oil/steam pipes and heater insulated with mineral wool
Connecting flanges	<ul style="list-style-type: none"> • DIN2633 (HT-water inlet) and EN 1092-1 PN16/40, counter flanges, gaskets, bolts and nuts included
Valves	<ul style="list-style-type: none"> • Globe and ball valves, nominal pressure class min. 16 bar
Name plates	<ul style="list-style-type: none"> • English, stainless steel, on piping and components

Dimensions



Unit	Main dimensions			Connections		Unit mass (kg)
	Length	Height	Depth	A/B	K/L	
APU-M-12-54-S	1250	1500	400	DN50	DN20	230
APU-M-29-144-S	1350	1600	450	DN65	DN25	320
APU-M-42-252-S	1450	1700	450	DN80	DN40	380
APU-M-12-54-T	1250	1500	450	DN50	DN25	270
APU-M-29-144-T	1350	1600	450	DN65	DN40	330
APU-M-42-252-T	1450	1700	450	DN80	DN50	400

Information in this publication is subject to change without notice. In case of any difference between the reference documents and the technical specification, the technical specification shall overrule. All APU documents supplied remain the property of Auramarine Ltd.

All rights reserved. No part of this document may be reproduced, stored, photocopied, recorded or transmitted without permission of the copyright owner.



Auramarine Ltd.
 sales@auramarine.com
 after.sales@auramarine.com
 www.auramarine.com

